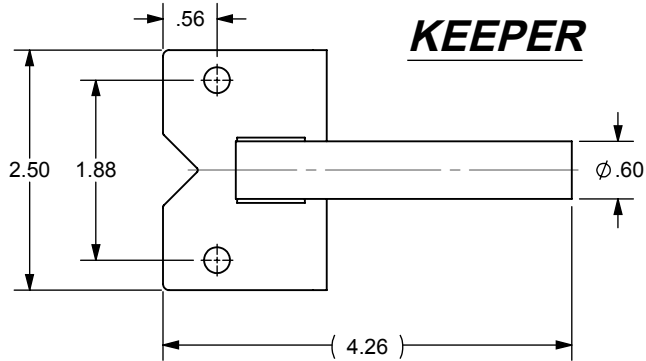
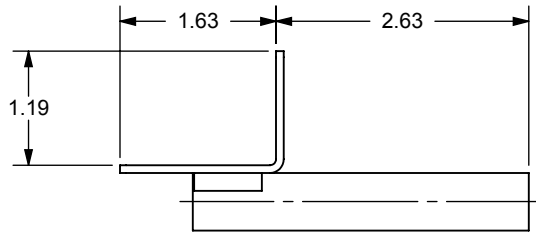
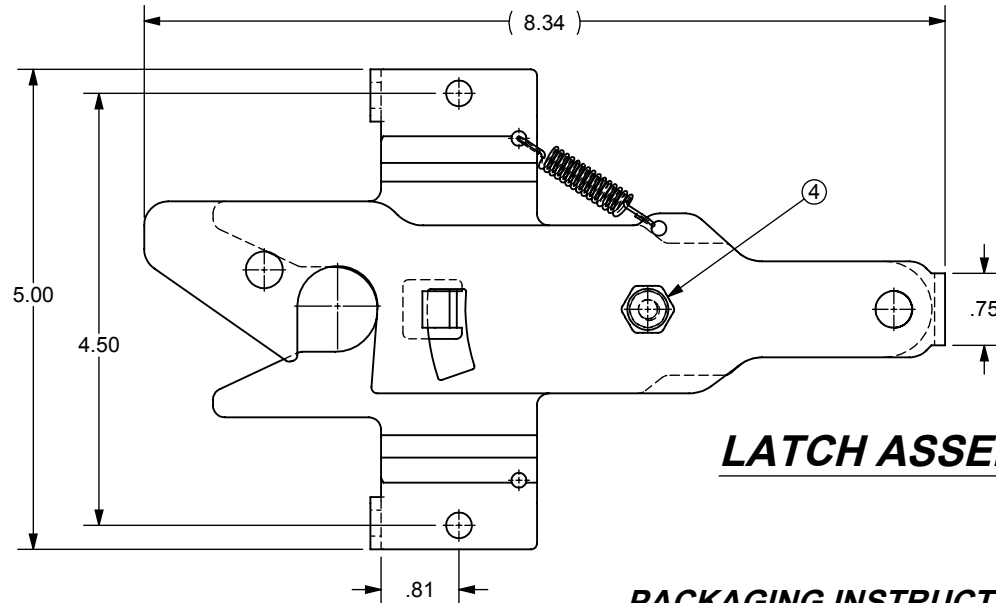
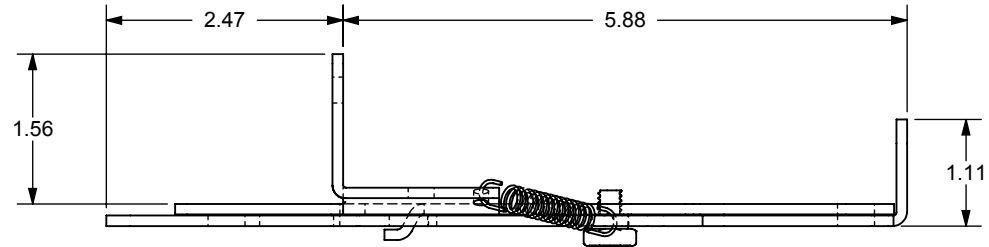


PART No.	MOUNTING SCREW	COLOR
NW6255-ZD-BK	"ZD" STL SCR w WASHER	BLACK
NW6255-SS-BK	"SS" SHEET MTL SCR	BLACK
NW6255-SD-BK	"SD" SELF-DR SCR	BLACK
NW6255-ZD-WH	"ZD" STL SCR w WASHER	WHITE
NW6255-SS-WH	"SS" SHEET MTL SCR	WHITE
NW6255-SD-WH	"SD" SELF-DR SCR	WHITE

REVISIONS				
ECR/DCR	REV.	DESCRIPTION	DATE	APPD
-	-	INITIAL RELEASE	08-08-14	-



**KEEPER**

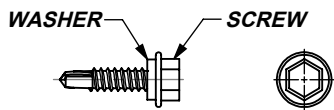


**LATCH ASSEMBLY**

**PACKAGING INSTRUCTIONS:**

**POLYBAGGED SET TO CONTAIN:**

- (8) MOUNTING SCREWS - POLYBAGGED**
- (1) LATCH ASSEMBLY - POLYBAGGED**
- (1) KEEPER - POLYBAGGED**



**SUPPLY ASSEMBLED AS SHOWN**

**MOUNTING SCREWS**

**OR**



**OR**



**(8) "ZD" MOUNTING SCREW**  
 #14 x 1.0" LG. SELF-DR. HEX  
 FLANGE SCREW  
 MAT'L: STEEL  
 FINISH: ZINC PLATED / POWDERCOAT  
 &  
**(8) MOUNTING SCREW WASHER**  
 Ø .420 x Ø .240 x .090 THK.  
 MAT'L: PLASTIC

**(8) "SS" MOUNTING SCREW**  
 #14 x .75" LG. PANHEAD SCREW  
 MAT'L: 300 SERIES SS  
 FINISH: POWDERCOAT

**(8) "SD" MOUNTING SCREW**  
 #14 x 1.0" LG. SELF-DR. HEX  
 FLANGE SCREW  
 MAT'L: 300 SERIES SS  
 FINISH: POWDERCOAT

DIMENSIONS ARE IN INCHES TOLERANCES: FRACTIONAL ±1/16" ANGULAR: MACH ±1° BEND ±1° TWO PLACE DECIMAL ±0.01 THREE PLACE DECIMAL ±0.005		
PROPRIETARY AND CONFIDENTIAL THE INFORMATION CONTAINED IN THIS DRAWING IS THE SOLE PROPERTY OF NATIONWIDE INDUSTRIES. ANY REPRODUCTION IN PART OR AS A WHOLE WITHOUT THE WRITTEN PERMISSION OF NATIONWIDE INDUSTRIES IS PROHIBITED.		
SIZE <b>A</b> DWG. NO. <b>CS--NW6255</b> SCALE: 1:2 WEIGHT:	<b>L/W POST LATCH          with 5" BRACKET</b>	
REV. <b>0</b> SHEET 1 OF 1		