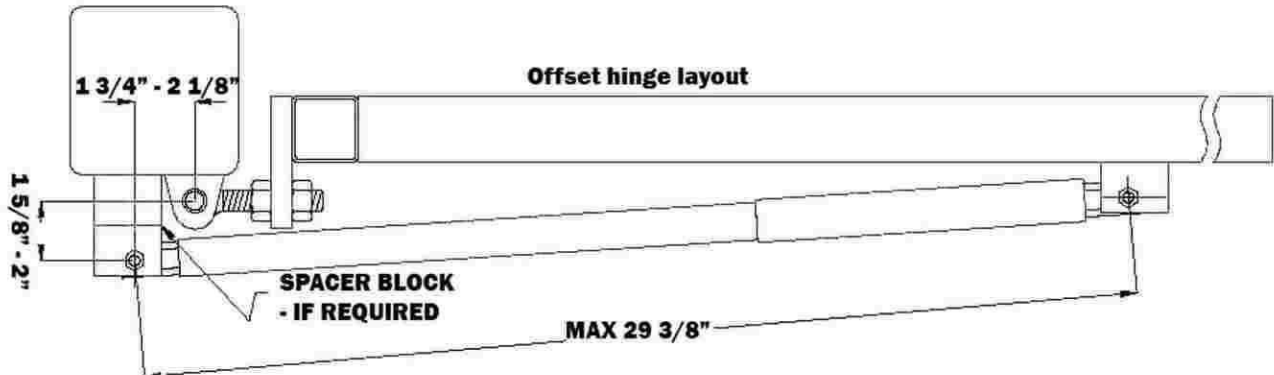
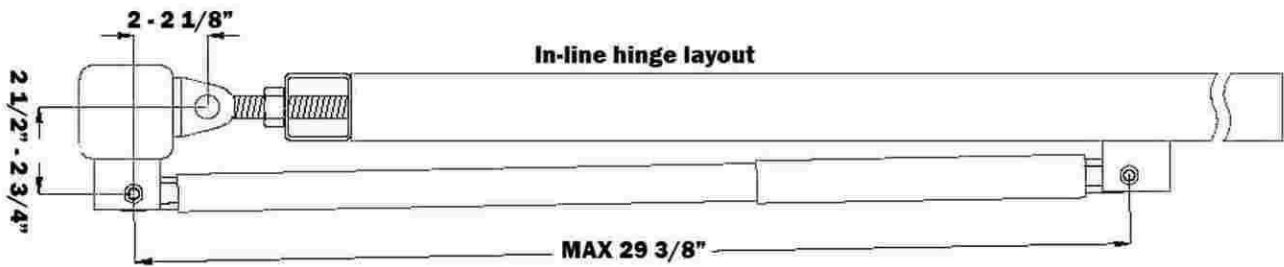


GC3 ~ Hydraulic Gate Closer

Installation Instructions



Mounting Bracket Dimensions

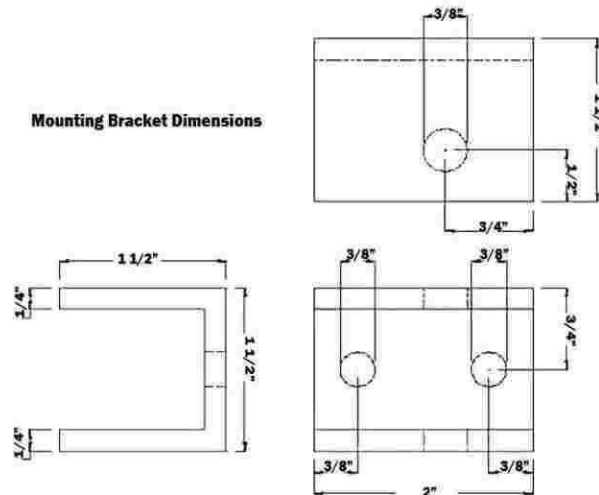


Table of Components in Kit

Qty	Description
1	Gate closer cylinder assembled with retaining bar
2	Aluminium brackets
2	Hexagon head stainless steel securing pins
1	Aluminium post bracket spacer
2	Post bracket spacer end plugs
2	M6 stainless steel socket head screws
1	Steel fitting bar
2	Steel fitting bar locating pins
4	Stainless steel spacers for fitting / mounting gate closer cylinder to mounting brackets



NOTE: DO NOT REMOVE THE RETAINING BAR FROM THE CLOSER

Screw Mounting Version GC3BK, GC3SC gate closer

Step 1 – Securing the Mounting Bracket to the Gatepost

Attach one of the aluminum mounting brackets to the gate post, following the dimensions from the appropriate layout on the previous page. If required, use the post bracket spacer to bring the mounting bracket to the correct position. If the post bracket spacer does not allow the appropriate dimensions (this happens with some hinge positions), make alternative spacers to suit.

Step 2 – Securing the Mounting Bracket to the Gate

Using one of the steel fitting bar locating pins (bent pin), attach one end of the steel fitting bar to the mounting bracket attached to the gate post. Attach the other mounting bracket to the steel fitting bar using the other locating pin, and then swing the bar and the bracket around to the gate. Check that the brackets are horizontally in-line with each other, and then mark the mounting holes for the second mounting bracket to be secured to the gate. Remove the steel fitting bar and locating pins. Drill the mounting holes in the gate. Secure the second mounting bracket to the gate. Check that the distance between the hole centers of both brackets is 29 ½" or less.

Step 3 – Fitting the Gate Closer to the Aluminum Mounting Brackets

Place the stainless steel spacers to the gate closer cylinder. Open the gate until the holes on the aluminum mounting brackets align with the holes in the stainless steel spacers fitted to the gate closer cylinder. Then connect the gate closer cylinder complete with its retaining bar and spacers to the aluminum mounting brackets on the gate post and gate using the hexagon headed (Allen wrench) stainless steel securing pins. Open the gate further and then remove the steel retaining bar from the gate closer cylinder. Release the gate and it will close automatically.

Step 4 – Final Set-up and Testing Function

Set the gates mechanical stop to the correct position. To do this, open the gate to a position where the distance between the center of the hexagon headed (Allen wrench) mounting pins is 22", or more. Set the gates mechanical stop to restrict the opening at this point. Open the gate and allow the closer to close the gate a few times to check the function.

Step 5 – Check mounting bolts

Check that all mounting bolts and screws are secure. Secure and tighten hex bolt into the underside of the hexagon headed (Allen) stainless steel securing pins using a thread locking liquid. Finally, remove plastic cover from the gate closer cylinder. The gate closer is now ready for use.

Maintenance

Periodically check that all screws are secure. Inspect gate closer for signs of damage from vandalism. Open the gate and allow the gate closer to close the gate a few times to check the function.